

Specifications

- Wear Layer: 22 mil (0.55 mm)
- Overall Thickness: 6.0 mm
- 100% Phthalate Free
- IXPE Acoustical Backing
- Reach Compliant
- Warranty: 10-Year Heavy Commercial & Lifetime Residential

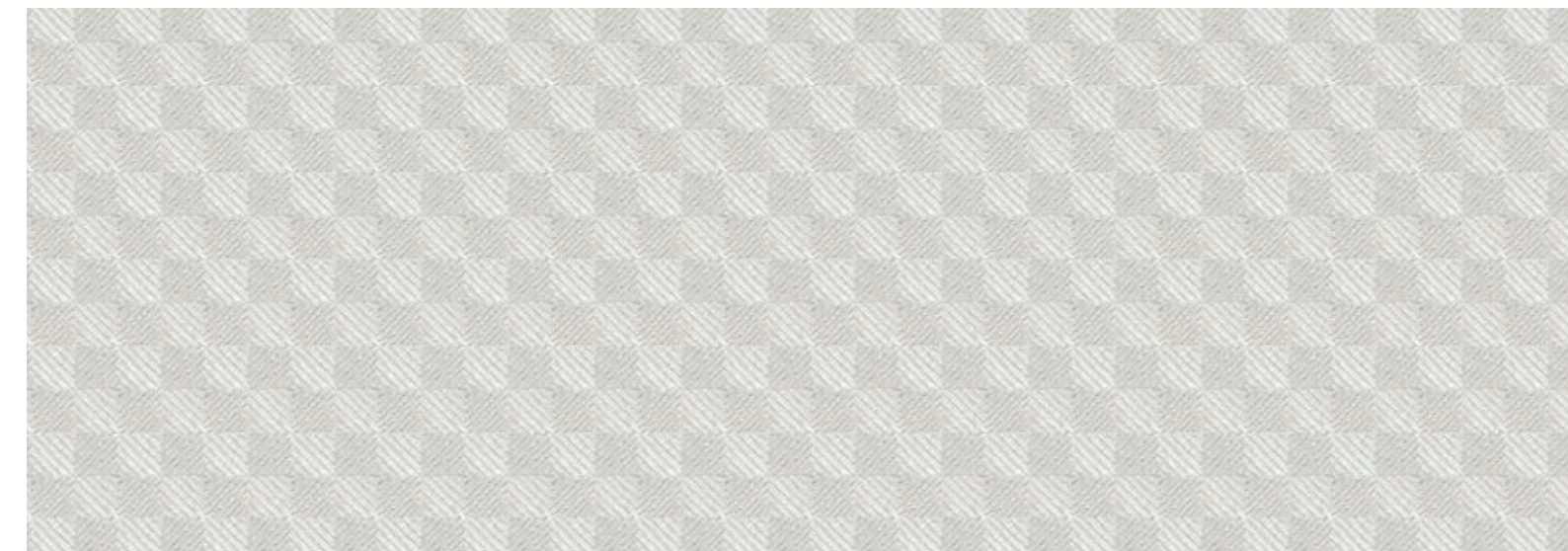


All RSRV planks and tiles have the AMP Coating

- Patent-Pending Coating
- 30% More Scratch Resistance Over Typical Coatings
- Exceptional Wear Resistance and High Strength

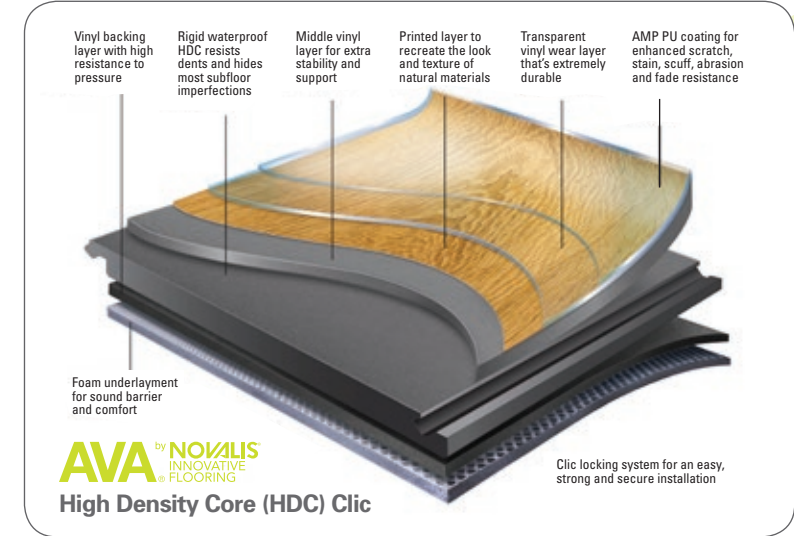


Kyoto 9.25" x 71.45"
Komma 6.6" x 59.75"
Washed 6.6" x 59.75"
Béton 18" x 36" (nominal)



IXPE Acoustical Backing

ASTM F1700-13 SOLID VINYL FLOOR TILE:	CLASS 1, TYPE B
ASTM D2047 STATIC COF FOR POLISHED SURFACES:	EXCEEDS INDUSTRY STANDARDS
ASTM F970-07 STATIC LOAD LIMIT: PASSES	PASSES
ASTM E648 CRITICAL RADIANT FLUX:	CLASS 1
ASTM E662 SMOKE DENSITY:	PASSES
ASTM F925 STAIN & CHEMICAL RESISTANCE:	EXCELLENT



Other products in the AVA collection:
 AVA DSGN® AVA SNSE® AVA SPRK®
 AVA SMPL™ AVA 2STYL™ AVA VRSE™

With worldwide sales offices and distribution partners, Novalis® is a leader in the design and manufacturing of innovative and sustainable resilient flooring. Established in 1984, Novalis has developed a diverse range of designs and products that have won numerous awards and are recognized by the industry as setting the benchmark in LVT.

AVA®, DSGN®, SNSE®, SPRK®, SMPL™, 2STYL™ and VRSE™ are trademarks of Novalis® Innovative Flooring.

© 2019 Novalis® Innovative Flooring
 avafloor.com • 877.861.5292
 sales@avafloor.com



AVA® RSRV



NOVALIS® INNOVATIVE FLOORING

AVA® RSRV™

AVA® RSRV™



With three unique wood patterns sharing six common base colors, RSRV provides a variety of registered embossed plank styles to mix and match, along with four concrete patterned tiles. Choose from wood grain collections that include the fine lines and bold size of Kyoto, the rugged aged look of Komma and the pure grains of Washed.

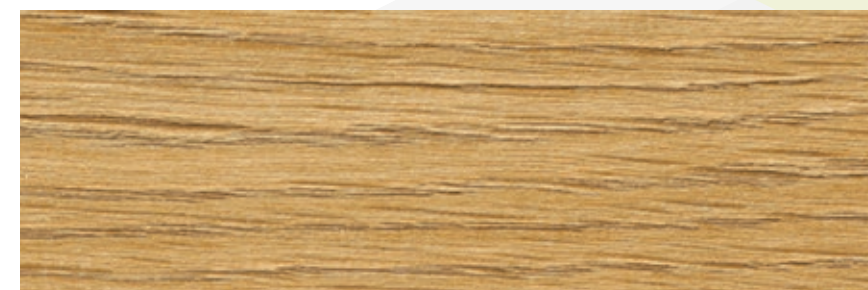
The robust style, high density core (HDC) clic construction and IXPE acoustical backing makes RSRV a perfect selection for busy Hospitality and Retail locations where style and consumer comfort are key.



Kyoto (9.25" x 71.45")



Kyoto Loft RKY001S-605



Kyoto Honey RKY002S-605



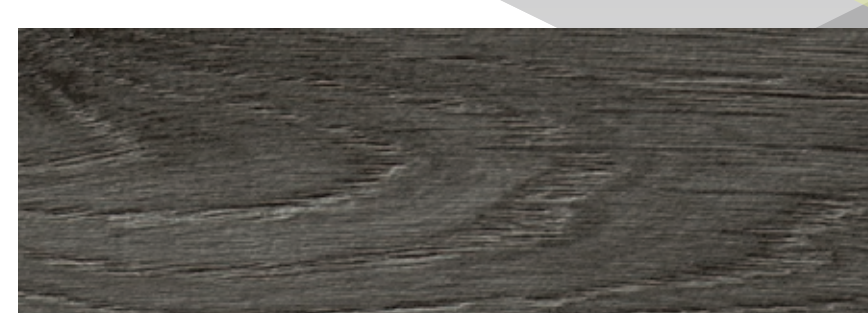
Kyoto Cellar RKY003S-605



Kyoto Edgewater RKY004S-605



Kyoto Legacy RKY005S-605



Kyoto Wharf RKY006S-605

Komma (6.6" x 59.75")



Komma Loft RKO001S-605



Komma Honey RKO002S-605



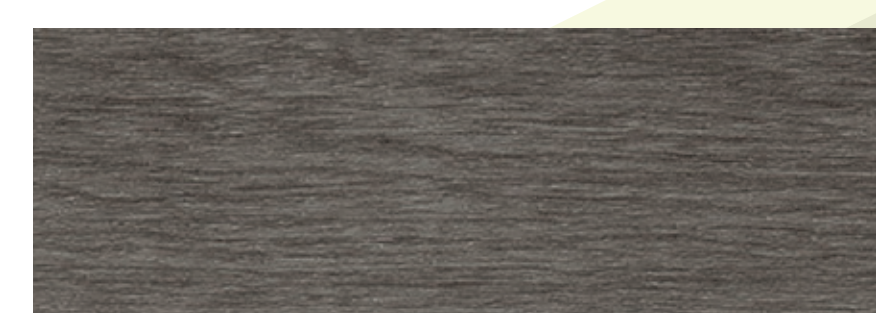
Komma Cellar RKO003S-605



Komma Edgewater RKO004S-605



Komma Legacy RKO005S-605

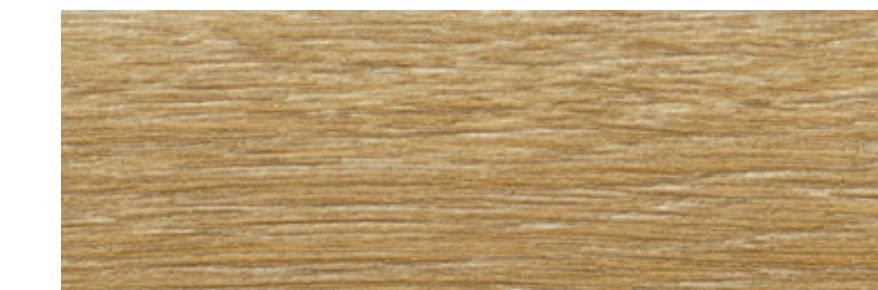


Komma Wharf RKO006S-605

Washed (6.6" x 59.75")



Washed Loft RWA001S-605



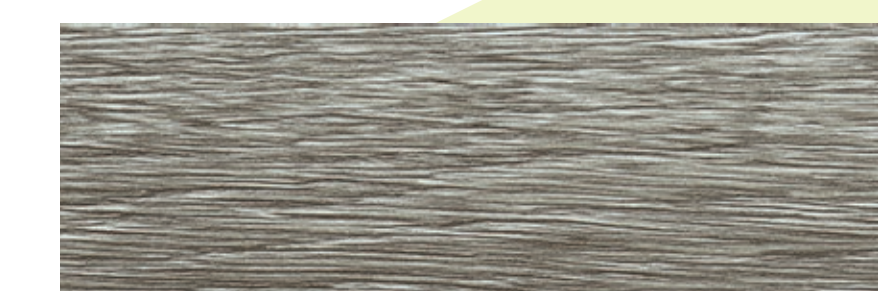
Washed Honey RWA002S-605



Washed Cellar RWA003S-605



Washed Edgewater RWA004S-605



Washed Legacy RWA005S-605



Washed Wharf RWA006S-605

Béton (18" x 36" nominal)



Béton Pearl RBE001S-605



Béton Iron RBE002S-605



Béton Steel RBE003S-605



Béton Harbor RBE004S-605